



Ford Yacht Club

Race Committee

29500 South Pointe Road

Grosse Ile, MI

2025 FYC Regatta

Skipper's Packet

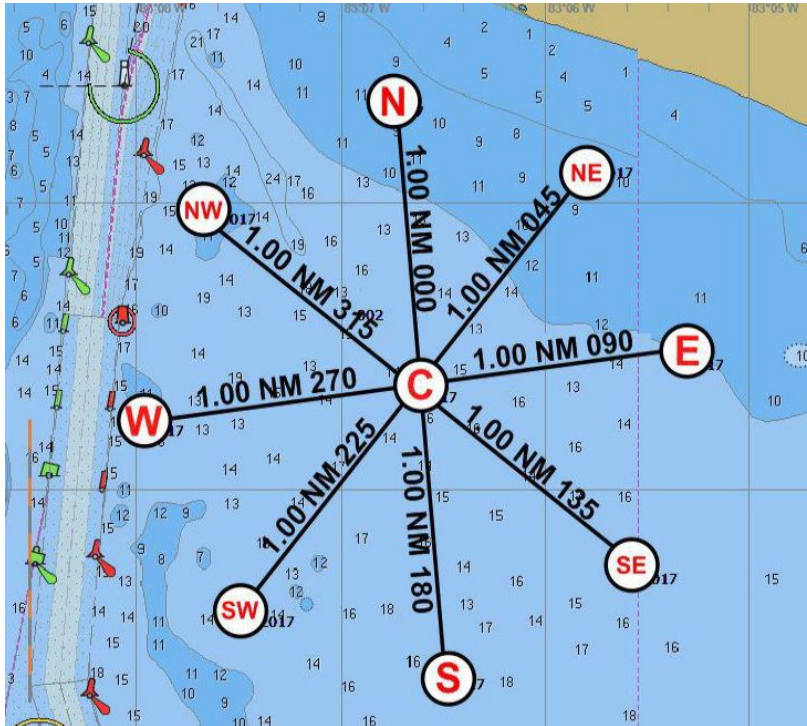
2023 Ford Yacht Club Regatta Course List

ALL MARK ROUNDINGS ARE TO PORT

Approximate Wind Direction		Spinnaker	Distance(nm)	JAM	Distance(nm)
North 360° (338° - 22°)	N1	C-Np-Wp-Sp-C	4.8	C-Np-Sp-C	4
	N2	C-Np-Wp-Sp-Np-C	6.8	C-Np-NWp-Ep-Np-C	6
	N3	C-Np-Wp-Sp-Np-Sp-C	8.8	C-Np-NWp-SWp-NWp-SWp-Sp-C	7.8
	N4	C-Np-Wp-Sp-Np-Sp-Np-C	10.8	C-Np-Wp-SEP-NEp-SEP-NEp-Np-C	10.3
Approximate Wind Direction		Spinnaker	Distance(nm)	JAM	Distance(nm)
Northeast 45° (23° - 67°)	NE1	C-NEp-NWp-SWp-C	4.8	C-NEp-SWp-C	4
	NE2	C-NEp-NWp-SWp-NEp-C	6.8	C-NEp-Np-SEP-NEp-C	6
	NE3	C-NEp-NWp-SWp-NEp-SWp-C	8.8	C-NEp-Np-Wp-Np-Wp-SWp-C	7.8
	NE4	C-NEp-NWp-SWp-NEp-SWp-NEp-C	10.8	C-NEp-NWp-Sp-Ep-Sp-Ep-NEp-C	10.3
Approximate Wind Direction		Spinnaker	Distance(nm)	JAM	Distance(nm)
East 90° (68° - 112°)	E1	C-Ep-Np-Wp-C	4.8	C-Ep-Wp-C	4
	E2	C-Ep-Np-Wp-Ep-C	6.8	C-Ep-NEp-Sp-Ep-C	6
	E3	C-Ep-Np-Wp-Ep-Wp-C	8.8	C-Ep-NEp-NWp-NEp-NWp-Wp-C	7.8
	E4	C-Ep-Np-Wp-Ep-Wp-Ep-C	10.8	C-Ep-Np-SWp-Sp-SWp-Sp-Ep-C	10.3
Approximate Wind Direction		Spinnaker	Distance(nm)	JAM	Distance(nm)
Southeast 135° (113° - 157°)	SE1	C-SEP-NEp-NWp-C	4.8	C-SEP-NWp-C	4
	SE2	C-SEP-NEp-NWp-SEP-C	6.8	C-SEP-Ep-SWp-SEP-C	6
	SE3	C-SEP-NEp-NWp-SEP-NWp-C	8.8	C-SEP-Ep-Np-Ep-Np-NWp-C	7.8
	SE4	C-SEP-NEp-NWp-SEP-NWp-SEP-C	10.8	C-SEP-NEp-Wp-SWp-Wp-SWp-SEP-C	10.3
Approximate Wind Direction		Spinnaker	Distance(nm)	JAM	Distance(nm)
South 180° (158° - 202°)	S1	C-Sp-Ep-Np-C	4.8	C-Sp-Np-C	4
	S2	C-Sp-Ep-Np-Sp-C	6.8	C-Sp-SEP-Wp-Sp-C	6
	S3	C-Sp-Ep-Np-Sp-Np-C	8.8	C-Sp-SEP-NEp-SEP-NEp-Np-C	7.8
	S4	C-Sp-Ep-Np-Sp-Np-Sp-C	10.8	C-Sp-Ep-NWp-Wp-NWp-Wp-Sp-C	10.3
Approximate Wind Direction		Spinnaker	Distance(nm)	JAM	Distance(nm)
Southwest 225° (203° - 247°)	SW1	C-SWp-SEP-NEp-C	4.8	C-SWp-NEp-C	4
	SW2	C-SWp-SEP-NEp-SWp-C	6.8	C-SWp-Sp-NWp-SWp-C	6
	SW3	C-SWp-SEP-NEp-SWp-NEp-C	8.8	C-SWp-Sp-Ep-Sp-Ep-NEp-C	7.8
	SW4	C-SWp-SEP-NEp-SWp-NEp-SWp-C	10.8	C-SWp-SEP-Np-NWp-Np-NWp-SWp-C	10.3
Approximate Wind Direction		Spinnaker	Distance(nm)	JAM	Distance(nm)
West 270° (248° - 292°)	W1	C-Wp-Sp-Ep-C	4.8	C-Wp-Ep-C	4
	W2	C-Wp-Sp-Ep-Wp-C	6.8	C-Wp-SWp-Np-Wp-C	6
	W3	C-Wp-Sp-Ep-Wp-Ep-C	8.8	C-Wp-SWp-SEP-SWp-SEP-Ep-C	7.8
	W4	C-Wp-Sp-Ep-Wp-Ep-Wp-C	10.8	C-Wp-Sp-NEp-NWp-NEp-NWp-Wp-C	10.3
Approximate Wind Direction		Spinnaker	Distance(nm)	JAM	Distance(nm)
Northwest 315° (293° - 337°)	NW1	C-NWp-SWp-SEP-C	4.8	C-NWp-SEP	4
	NW2	C-NWp-SWp-SEP-NWp-C	6.8	C-NWp-Wp-NEp-NWp-C	6
	NW3	C-NWp-SWp-SEP-NWp-SEP-C	8.8	C-NWp-Wp-Sp-Wp-Sp-SEP-C	7.8
	NW4	C-NWp-SWp-SEP-NWp-SEP-NWp-C	10.8	C-NWp-SWp-Ep-Np-Ep-Np-NWp-C	10.3

2025 Buoy Locations

(same as 2025 WSSC WNATR Locations)



C	42° 01.2511' N	083° 06.6750' W
N	42° 02.2571' N	083° 06.7124' W
NE	42° 01.9817' N	083° 05.7005' W
E	42° 01.2642' N	083° 05.3938' W
SE	42° 00.5449' N	083° 05.7247' W
S	42° 00.2524' N	083° 06.6699' W
SW	42° 00.5449' N	083° 07.6253 W
W	42° 01.2793' N	083° 07.9850' W
NW	42° 01.9571' N	083° 07.6256' W





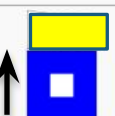





Attachment B

Ford Yacht Club
Race Committee

Starting information

CLASS	CLASS FLAG	Rating
Spinnaker A	Blue	TBD _____
Spinnaker B	Yellow	TBD _____
One Design / Spinnaker C	Green	TBD _____
JAM A	White	TBD _____
JAM B	Purple	TBD _____
Cruising Class	FYC Burgee	ALL

Sample starting sequence per RRS rule 26

Flag signal	Number of sound signals when raised	Number of sound signals when lowered	Description
	1 ↑		Warning Signal. 5 minutes to race start when class flag raised.
	1 P ↑		Preparatory signal. 4 minutes to start when P flag raised. Flag P used or if a starting penalty applies I, Z, Black flag or I over Z is used in place of P.
	1 P ↓	 Long sound	Preparatory signal. P flag removed 1 minute before start. Flag P used or if a starting penalty applies I, Z, Black flag or I over Z is used in place of P.
	1 ↓		Start Signal. Race start when class flag removed.



Individual
Recall
'X'

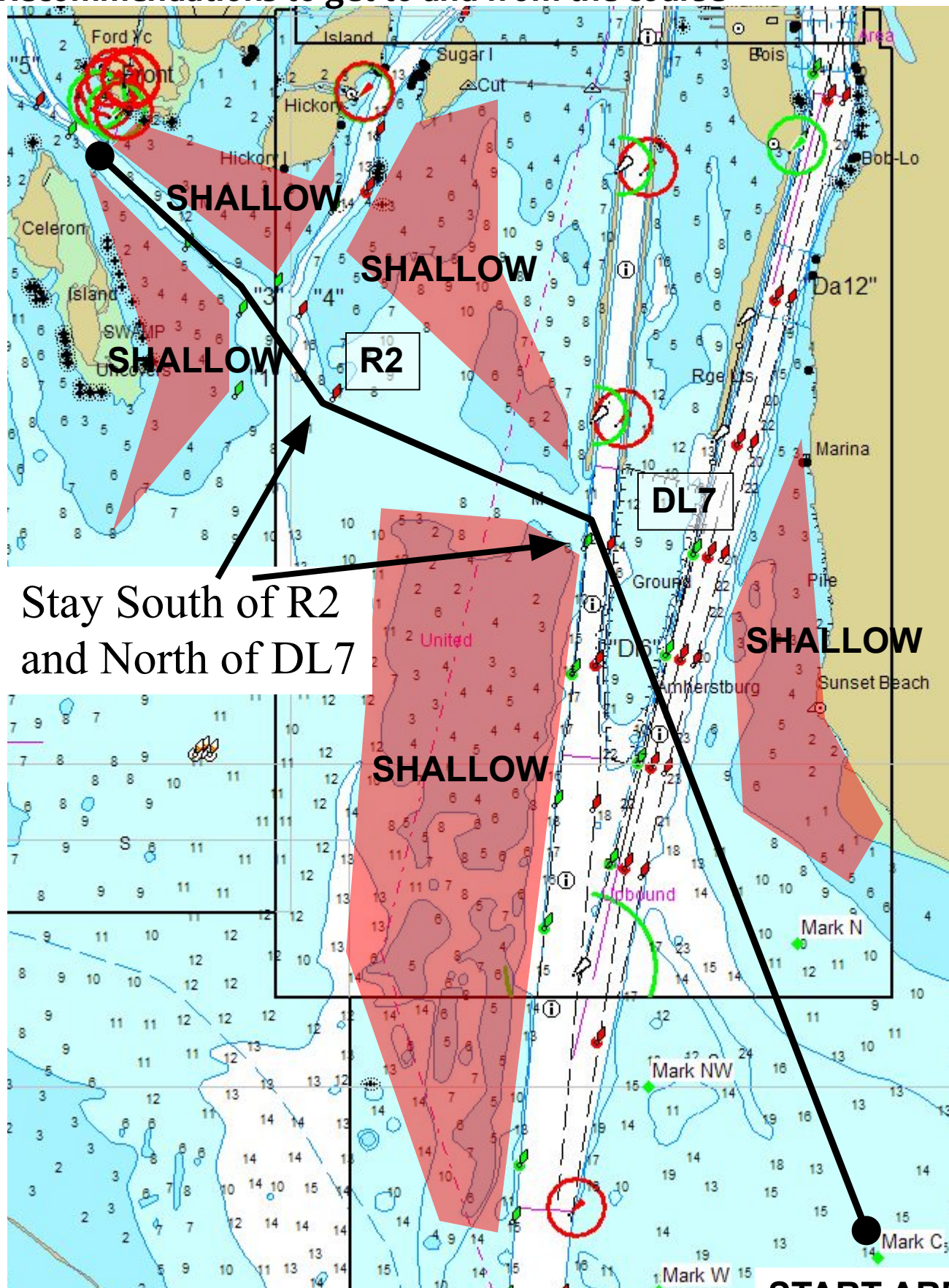
Over Early –
Individual
Recall



General
Recall

Over Early –
General Recall

Recommendations to get to and from the course



START AREA